

Impedance Compensation (Zobel Network) for Ground Referenced Outputs

INTRODUCTION

Many Wolfson audio devices now have ground referenced headphone and line outputs, incorporating an innovative dual-mode charge pump architecture (Wolfson 'Class-W') - to optimise efficiency and power consumption during playback.

The ground referenced output is achieved using an internal charge pump to power the headphone amplifier and means that there can be a direct connection between the Wolfson device output and the headphone load. This has several advantages compared to a VMID referenced output, including improved power consumption, better pop-click performance, and reduced overall cost of external components.

For stable audio performance with all types of headphone, a zobel network is required at any ground referenced output. If the zobel network is omitted, it is possible that charge pump switching frequency effects will affect audio performance.

This document describes why the zobel network is recommended and how the zobel network can work in the application.

CHARGE PUMP

The Wolfson ground-referenced amplifiers incorporate a dual-mode charge pump which generates the supply rails for the output drivers. The charge pump has a single supply input, CPVDD, and generates split rails VPOS and VNEG according to the selected mode of operation. The charge pump connections are illustrated in Figure 1. An input decoupling capacitor is also required at CPVDD, depending upon the system configuration. External component requirements for the capacitors in Figure 1 are detailed in WAN0214 "External Component requirements for ground referenced outputs".

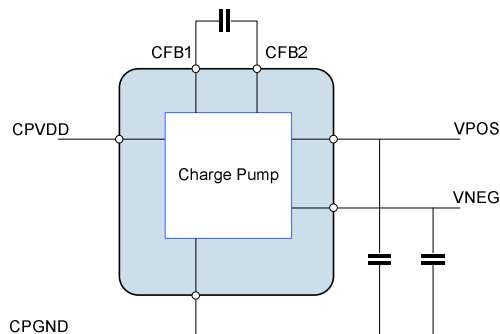


Figure 1 Charge Pump

The charge pump switches the CPVDD supply at a high frequency rate, as specified in the device datasheet. The switching frequency is derived from MCLK, which is also used for clocking the CODEC and other circuits within the device.

Switching noise arising from the charge pump can be observed on the VPOS/VNEG lines, and can pass through to the output of the amplifier. External components are used to filter the switching noise effects in the audio signal paths. The switching noise ripple is highest when the output load impedance is high. A typical headphone impedance vs frequency plot is illustrated in Figure 2. It can be seen that, for a typical headphone, the impedance above 50kHz is very high, and the impedance of headphone increases rapidly above 50kHz.

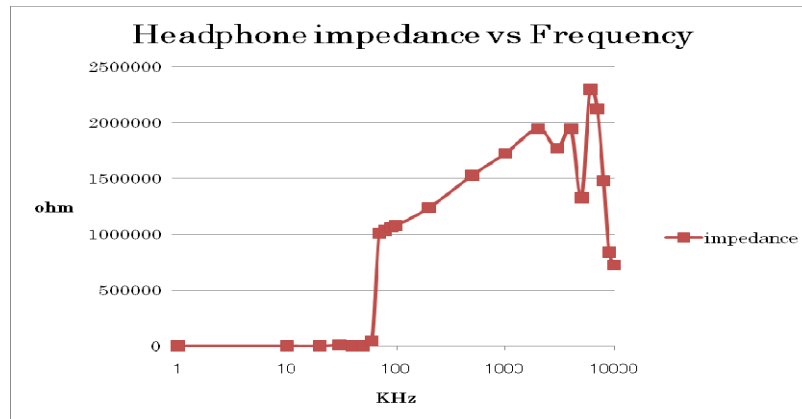


Figure 2 Headphone Impedance vs Frequency

For best performance, the high frequency impedance of the load must be reduced, in order to stabilise the headphone output and reduce the charge pump switching noise. Even a small level of switching noise may be audible with some headphones. The use of a zobel network is recommended in order to reduce the load impedance and reduce switching noise.

ZOBEL NETWORK

To stabilise the headphone output and reduce high frequency charge pump switching noise, it is recommended to connect a zobel network to each ground-referenced output. The recommended zobel network components are illustrated in Figure 3. The zobel network should comprise a 20Ω resistor and $0.1\mu\text{F}$ capacitor in series with each other, as illustrated.

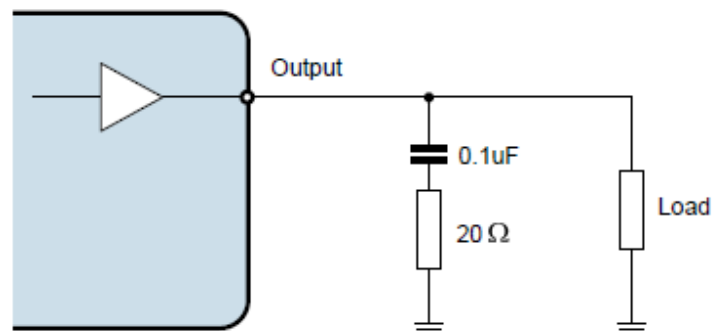


Figure 3 Zobel Network

The zobel network components should be connected to each ground-referenced output pin if the output is to be used. For example, on WM8903, these pins are called HPOUTL, HPOUTR, LINEOUTL and LINEOUTR.

The components of the zobel network have the effect of dampening high frequency oscillations and instabilities that can arise outside the audio band under certain conditions. Possible sources of these instabilities include the inductive load of a headphone coil or an active load in the form of an external line amplifier. The capacitance of lengthy cables or PCB tracks can also lead to amplifier instability.

If any Ground-referenced output pin is not required:

1. The zobel network components can be omitted from that output pin, and the pin can be left floating.
2. Care should be taken that the application software does not enable the output. Enabling any Ground-referenced output which has no zobel network can affect the stability of other Ground-referenced outputs on the same device.

CONCLUSION

On all ground-referenced amplifier outputs, it is recommended to include zobel network components in order to reduce the high frequency impedance of the load. The specified audio performance cannot be guaranteed if these components are omitted.

APPLICATION SUPPORT

If you require more information or require technical support, please contact the Wolfson Microelectronics Applications group through the following channels:

Email: apps@wolfsonmicro.com
Telephone Apps: +44 (0) 131 272 7070
Fax: +44 (0) 131 272 7001
Mail: Applications Engineering at the address on the last page

or contact your local Wolfson representative.

Additional information may be made available on our web site at:

<http://www.wolfsonmicro.com>

IMPORTANT NOTICE

Wolfson Microelectronics plc ("Wolfson") products and services are sold subject to Wolfson's terms and conditions of sale, delivery and payment supplied at the time of order acknowledgement.

Wolfson warrants performance of its products to the specifications in effect at the date of shipment. Wolfson reserves the right to make changes to its products and specifications or to discontinue any product or service without notice. Customers should therefore obtain the latest version of relevant information from Wolfson to verify that the information is current.

Testing and other quality control techniques are utilised to the extent Wolfson deems necessary to support its warranty. Specific testing of all parameters of each device is not necessarily performed unless required by law or regulation.

In order to minimise risks associated with customer applications, the customer must use adequate design and operating safeguards to minimise inherent or procedural hazards. Wolfson is not liable for applications assistance or customer product design. The customer is solely responsible for its selection and use of Wolfson products. Wolfson is not liable for such selection or use nor for use of any circuitry other than circuitry entirely embodied in a Wolfson product.

Wolfson's products are not intended for use in life support systems, appliances, nuclear systems or systems where malfunction can reasonably be expected to result in personal injury, death or severe property or environmental damage. Any use of products by the customer for such purposes is at the customer's own risk.

Wolfson does not grant any licence (express or implied) under any patent right, copyright, mask work right or other intellectual property right of Wolfson covering or relating to any combination, machine, or process in which its products or services might be or are used. Any provision or publication of any third party's products or services does not constitute Wolfson's approval, licence, warranty or endorsement thereof. Any third party trade marks contained in this document belong to the respective third party owner.

Reproduction of information from Wolfson datasheets is permissible only if reproduction is without alteration and is accompanied by all associated copyright, proprietary and other notices (including this notice) and conditions. Wolfson is not liable for any unauthorised alteration of such information or for any reliance placed thereon.

Any representations made, warranties given, and/or liabilities accepted by any person which differ from those contained in this datasheet or in Wolfson's standard terms and conditions of sale, delivery and payment are made, given and/or accepted at that person's own risk. Wolfson is not liable for any such representations, warranties or liabilities or for any reliance placed thereon by any person.

ADDRESS:

Wolfson Microelectronics plc
Westfield House
26 Westfield Road
Edinburgh
EH11 2QB
United Kingdom

Tel :: +44 (0)131 272 7000

Fax :: +44 (0)131 272 7001